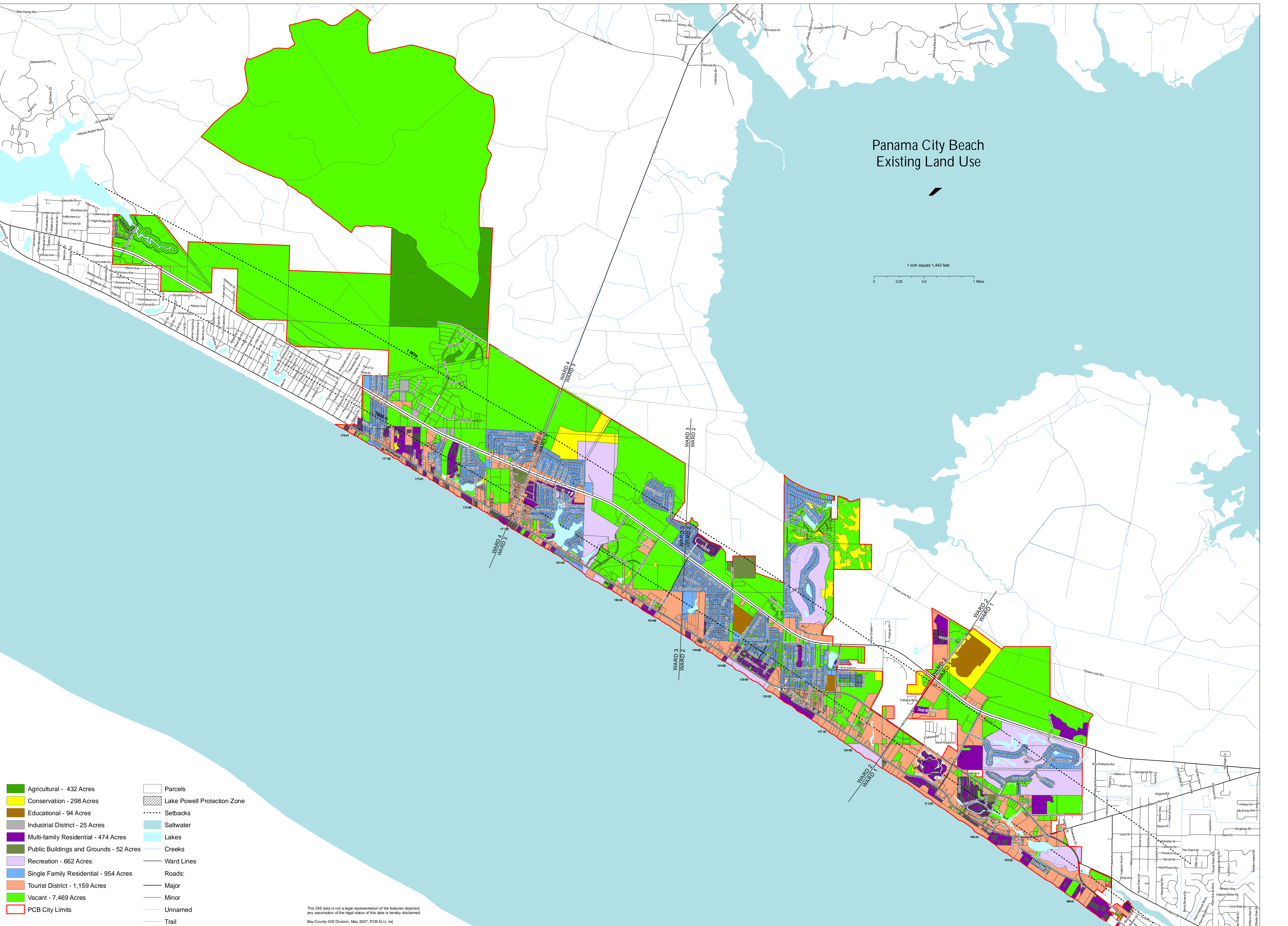
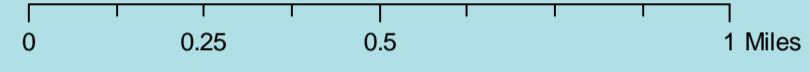


Panama City Beach Existing Land Use

1 inch equals 1,443 feet



- Agricultural - 432 Acres
 - Conservation - 298 Acres
 - Educational - 94 Acres
 - Industrial District - 25 Acres
 - Multi-family Residential - 474 Acres
 - Public Buildings and Grounds - 52 Acres
 - Recreation - 662 Acres
 - Single Family Residential - 954 Acres
 - Tourist District - 1,159 Acres
 - Vacant - 7,469 Acres
 - PCB City Limits
- Parcels
 - Lake Powell Protection Zone
 - Setbacks
 - Saltwater
 - Lakes
 - Creeks
 - Ward Lines
 - Roads:
 - Major
 - Minor
 - Unnamed
 - Trail

This GIS data is not a legal representation of the features depicted; any assumption of the legal status of this data is hereby disclaimed.
 Bay County GIS Division, May 2007, PCB ELU, rvl